

FAQ's

Q: How long will the procedure take?

A: Sometimes a partial can be delivered in as little as two visits, but usually the average is 4 visits. Approximately two to six weeks.

Q: Will it hurt?

A: tcs® Flexible Partial Dentures are non-invasive, so there is minimal discomfort. Sometimes preparations to the abutment teeth are necessary, but there is little discomfort associated with this procedure.

Q: How long will my partial denture last?

A: tcs® partials are designed to last a lifetime. Should modifications be needed as time goes by due to natural changes in your mouth, your tcs® partial denture can usually be modified rather than replaced.

Q: Can I wear my denture at night?

A: Some designs of partial dentures may not be recommended for overnight use. Ask your dentist.

Q: Will I have difficulty chewing?

A: Some foods may never be easy to chew with dentures, but a properly designed and fitted partial denture combined with tcs® material's durability and superior adaptation will give you the best chewing experience of any denture material available.

Q: Will the partial change how I speak?

A: Sometimes it is difficult to speak clearly with missing teeth, therefore, the partial may improve your speech clarity. If you find it difficult to pronounce certain words, do not worry, over time you will become accustomed to speaking properly with your tcs® partial denture.

Q: Can I make minor adjustments to my partial denture?

A: We strongly recommend that you do not alter your partial in any way. If adjustments need to be made, please see your dentist.

Proper Care of Your New tcs® Appliance

Oral Health plays a vital role in our general well-being.

tcs® Flexible Partials are fabricated from advanced biocompatible thermoplastics. They are very easy to care for. In order to keep your restoration looking and feeling like new, please follow these simple recommendations:

1. Continue to brush your natural teeth and gums as directed by your dentist.
2. Clean your restoration daily. Simply rinse your restoration under warm running water for approximately 15 to 30 seconds in order to remove any food particles prior to soaking it in the denture cleaner, we recommend tcs® Dental Appliance Cleaner.
3. With a very soft denture brush, brush your restoration using water only. Rinse again.
4. Place your restoration in tcs® Dental Appliance Cleaner for at least 15 minutes per day.
5. Keep your restoration in water or denture solution when you are not wearing it.
6. DO NOT use bleach, toothpaste or similar cleaning products as these may scratch the surface or change the color of your restoration.

www.tcsfresh.com



tcs® Fresh Order Form for US Only

If you are outside the US, please ask your dentist where to purchase tcs® Fresh Products. Prices may vary.

- ☐ **A) Item #4505-01 (Dental Appliance Cleaner) \$30.00**
- ☐ **B) Item #4013-01 (Sonic Cleaner) \$18.95**
- ☐ **C) Item #4504/20FR-01 (Cool Mint Wipes) \$10.00**
- ☐ **D) Item #4504/PY-01 (Cool Mint Spray) \$12.00**
- ☐ **E) Item #4506FR-01 (Dental Appliance Brush) \$3.65**

Save with packages!

- ☐ **A + B \$43.95 save \$5.00**
- ☐ **A + C \$35.00 save \$5.00**
- ☐ **A + B + C \$52.00 save \$6.95**
- ☐ **A + B + C + D + E \$65.00 save \$9.60**

☐ **Add a dental appliance brush (E) Item #4506FR-01 with any package for only \$3.00**

TO ORDER:

- Call: 562-426-2970 / 866-426-2970
- Fax form to: 562-426-5154
- Online: More Products Online
- Mail form with check (payable to TCS, Inc.) to:
TCS, Inc.
2619 Lime Ave.
Signal Hill, CA 90755

FREE SHIPPING

TOTAL AMOUNT: \$ _____

☐ American Express ☐ Master Card / Visa ☐ Discover ☐ Check Enclosed

Card # _____ Exp. Date _____

Name _____ Phone # _____

Street _____ Apt. # _____

City _____ State _____ Zip Code _____

E-mail _____

Restore your Smile & Confidence with
tcs® Removable Partial Dentures

Informational brochure about tcs® Flexible Partial

If you are missing one or more teeth and are looking into replacement options, luckily you have plenty of choices. You don't have to worry about a partial denture compromising your smile. Today, breakthroughs in dental technology give your dentist a great deal to offer you. When it comes to deciding on a replacement, many things are considered, i.e. cost, procedure, aesthetics, etc. These dental care decisions should always be made in consultation with your dentist. However, for many patients that do not want the unreliability of temporary appliances such as flippers, revealing partials such as acrylic with metal clasps, or expensive options like implants that require highly invasive surgery and long healing periods, *tcs® Flexible Partial*s may be the ideal choice.

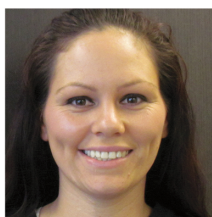
tcs® Flexible Partials in Combination with Metal Substructure:

In some cases a metal substructure is recommended in conjunction with *tcs®* material, particularly when several teeth are missing from both sides of the back of your mouth. But don't worry, the partial is still undetectable because the clasps are still fabricated using *tcs® Flexible Partial*'s tissue colored material. Your dentist will choose the design that works best for your particular needs.

Implant Patients

Implant treatment can take up to 6 months, *tcs® Flexible Partial*s are ideal as a transitional restoration during the healing period prior to insertion of your implant. With *tcs® Flexible Partial*s you do not have to feel self-conscious nor uncomfortable during this treatment period.

TRUE LIFE STORY



Tiffany ... a young, athletic woman in her early thirties from California lost most of her teeth in an automobile accident at the age of 12. Fortunately, Tiffany does not remember the accident, however she does sadly remember the endless days in the hospital and the five months she attended school with most of her upper teeth missing.

When she finally received her partial denture, she refused to wear it because it felt so awkward. She says she felt uncomfortable with or without it. It was a no-win situation. After many years of wearing an uncomfortable metal and acrylic partial denture that would constantly break at the most unfortunate moments, Tiffany was finally prescribed a *tcs® Unbreakable*. Tiffany is excited about finally wearing something she can count on, look great, and feel even better.



What is TCS?

tcs® Flexible Partials are made out of a biocompatible material that is non-toxic and contains no BPA or unsightly metal clasps. With unique physical properties, flexibility, color, and stability, the functionality of *tcs® Flexible Partial Dentures* helps preserve existing teeth. *tcs® Flexible Partial Dentures* adjust and flex with the contours of your mouth as you chew, talk, and smile.

Comfort

- Partial adjust and flex with the natural contours of your mouth.
- Lightweight and thin for optimal comfort.
- Fabricated using high pressure injection for a precise fit.

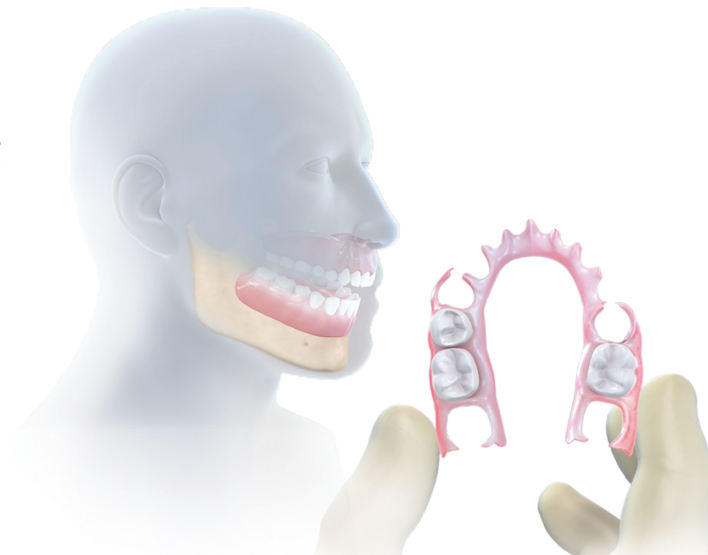
Reliable:

- Biocompatible and ideal for patients allergic to acrylics, monomer, and/or nickel.
- Non-invasive treatment.
- Ideal transitional restoration during the healing period for implants.

Natural Looking

- Natural hue allows the appliance to simulate real gums and teeth more organically.
- Unsightly metal clasps are gone forever. *tcs® Flexible Partial*s are designed using tissue colored clasps for a natural appearance.
- Designed thin to avoid the awkward bulkiness of conventional partial dentures.

Look and feel your best with
tcs® Flexible Partials



LEARN MORE ABOUT *tcs® Flexible Partial*s



A 1.5 minute animation video that demonstrates how a typical *tcs®* partial denture compares to a conventional metal and acrylic partial.



TCS is featured in "Improving Lives through Effective Dental Solutions," 5 minute Health Brief hosted by NFL star, Terry Bradshaw.

* scan to view or visit www.tcsdentalinc.com

tcs® Fresh Line: A clean, bacteria free appliance is vital to your health and to the appearance and longevity of your appliance. TCS offers a variety of products designed to keep your appliance looking and feeling like new! www.tcsfresh.com
Receive FREE TCS Fresh samples with your new TCS partial.



- A) Item #4505-01**
tcs® Concentrated Dental Appliance Cleaner
Professional Strength
Dissolves away stains that brushing leaves behind. Removes coffee, tea, tobacco, and iron stains as well as plaque, tartar, calcium and calculus.
Box of 10: 10 month supply.



- B) Item #4013-01**
tcs® Sonic Cleaner
Dental appliance container designed to help you obtain quick & easy professional cleaning results with the aid of high energy cycle waves. Compact design, ideal to use as a storage container. Must be used in combination with a dental appliance cleaner.
2AA' batteries included. Personalize with your name, nickname, etc. Call us for details.

- C) Item #4504/20FR-01**
tcs® Cool Mint Wipes
Individually wrapped, mint flavor wipes to clean and refresh your appliance **ON-THE-GO!**
Conveniently store them in your purse, bag, etc.
Box of 20. Single-use.



- D) Item #4504/PY-01**
tcs® Cool Mint Spray
Mint flavored spray formula used to refresh your appliance **ON-THE-GO!**
Yields approx. 200 misty sprays



- E) Item #4506FR-01**
tcs® Dental Appliance Brush
Strong, resilient soft bristle brush to thoroughly clean dental appliances without scratching the surface.

