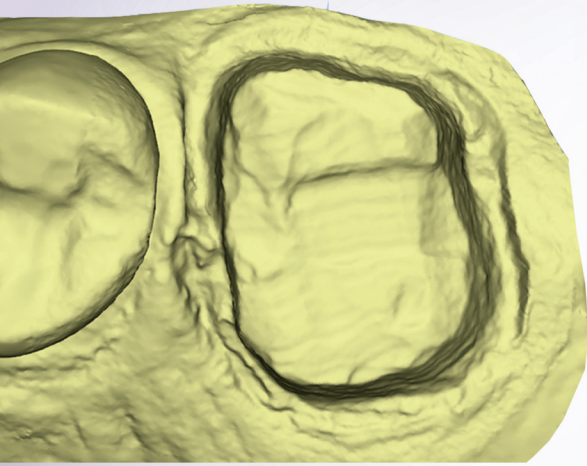


# Common Errors

Any of the common errors will sacrifice the integrity of the scan. This can result in an inaccurate restoration.



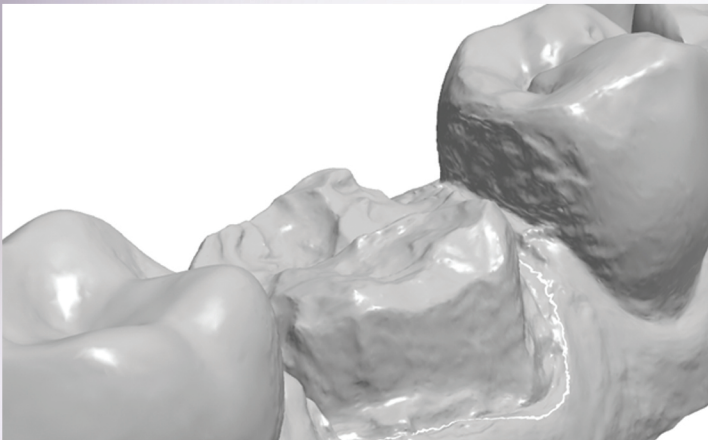
Example of poor retraction

## Insufficient Gingival Retraction

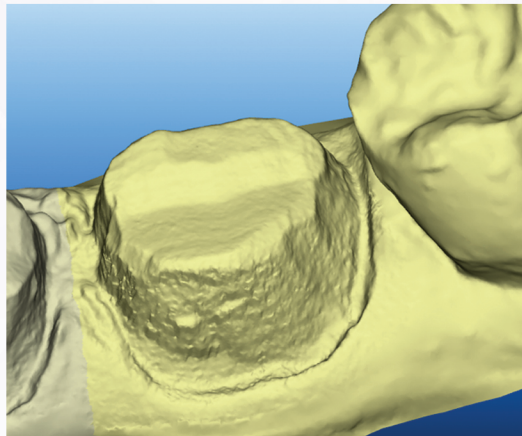
**Solution:** Intra-oral scanners can only capture what is visible to the eye. **Dual cord retraction** is always recommended to avoid tissue interference.

## Moisture Control

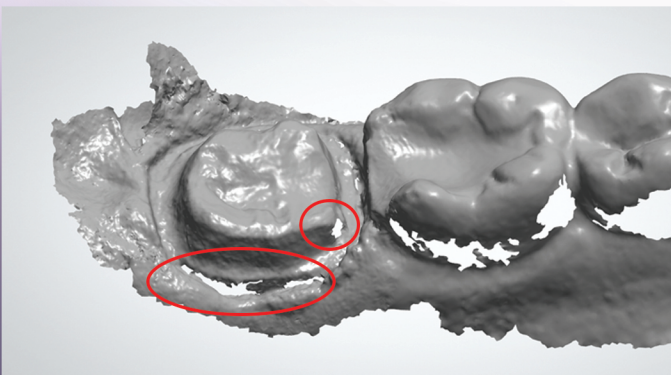
**Solution:** To keep the mouth dry while scanning, **use compressed air**. If necessary use cotton rolls, dry tips and saliva ejectors. Check that the wand is clean and free of moisture.



Contact with moisture



prep with moisture



Missing information on prep and margin

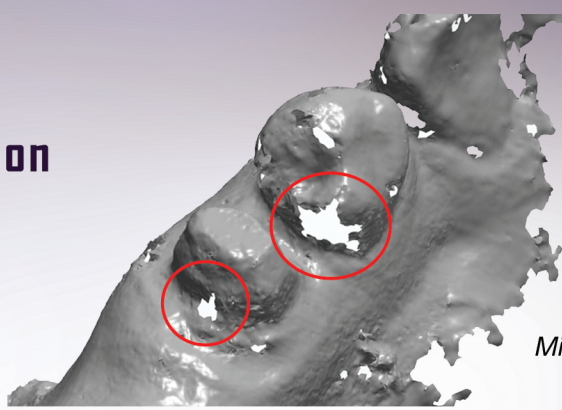
## Missing Information

**Solution:** Ensure that the scanner has **adequate time to capture a surface before moving the wand**. Moving the wand too quickly can result in missing information or distortion. When using a 3M scanner, insufficient spray can also make it difficult to capture a surface.



## Missing Information

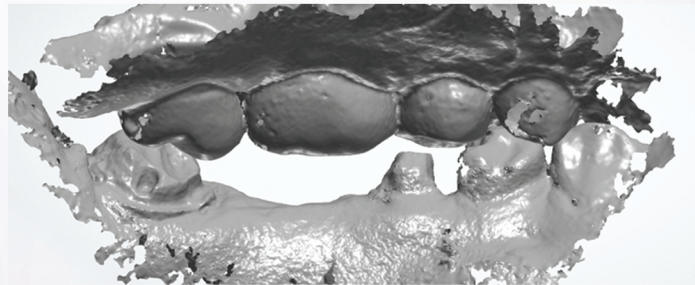
Continued...



*Missing information on the adjacent contact*

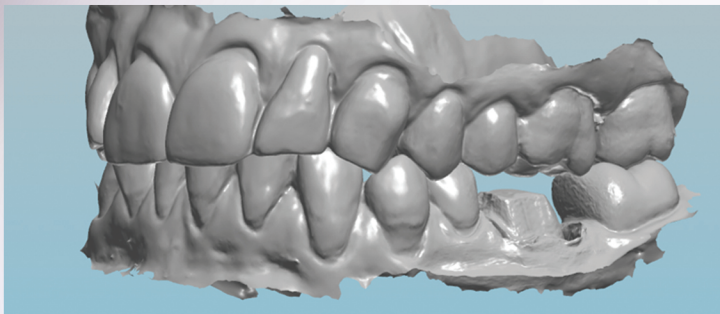
## Insufficient Bite Information

**Solution:** If there are no posterior stops, **a full arch scan is always recommended**. A full scan of **all** anterior teeth is recommended for all anterior restorations. For single unit restorations, capture at least two adjacent teeth on the mesial and distal.

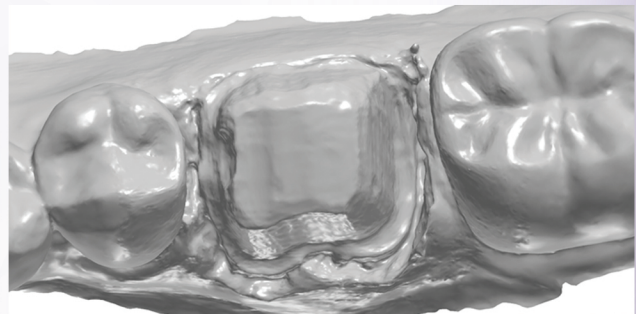


*Insufficient bite information*

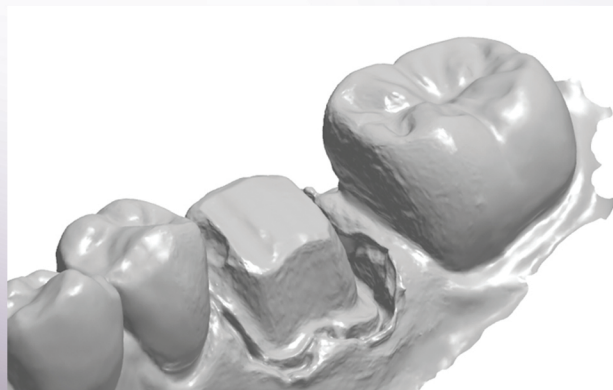
## Examples of a Quality Scan:



*The entire arch was scanned, providing plenty of information to ensure accurate occlusion*



*Proper retraction allowed the scanner to clearly capture the margin*



*The prep and adjacent contacts are fully captured and moisture free*